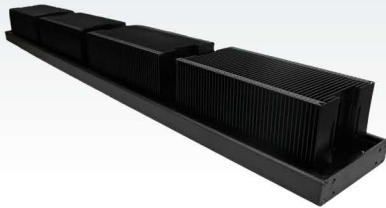


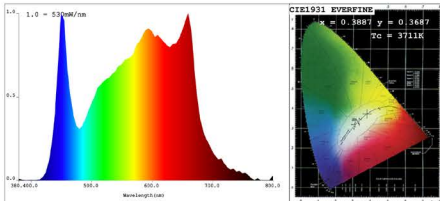
Surpasses ALL
LED Manufacturers



INFINITY 600

Infinity 600 is designed for commercial horticulture. Using the highest quality diodes on the market along with the #1 driver on the market, the Infinity 600 out competes any other LED manufacturers.

LIGHT SOURCE TEST



CIE Color Parameters:
 Chromaticity Coordinate: $x=0.3687$ $y=0.3687$ $u=0.2339$ $v=0.3328$
 CCT: $T_c = 3711K$ F_{cp} Wavel: $\lambda_c=583.7nm$ Purity=27.3%
 Peak Wavel: $\lambda_p=660nm$ Half Width: $\lambda_{23.6nm}$ Ratio: $R=20.7\%$ $G=75.3\%$ $B=4.0\%$
 Average Wavel: 583nm
 Rendering Index: $R_a=93.7$
 R1 =94 R2 =97 R3 =97 R4 =93 R5 =94 R6 =93 R7 =94 R8 =88
 R9 =73 R10=92 R11=93 R12=77 R13=95 R14=98 R15=94

Photo Parameters:
 Flux: $\Phi_v=5933.7(lm)$ Luminous efficacy: 62.24 (lm/W) Luminous Power: $P_v=96.04(W)$

Electrical Parameters:
 U=233.4V I=0.432A P=95.3W PF=0.946

Instrument Status: Scan Range: 380.0nm-800.0nm Interval: 5.0nm $T_p = 32385$
 REF = 4297 $\lambda = -1.3154$ $T_{90} (DPT) = 34.94degrees$ centigrade

KEY FEATURES

- 7th Generation Proprietary LED Diodes
- Slim Form Factor for Greenhouse applications
- Auto sensing voltage of 120V, 240V, 277V
- 5 Year Warranty

APPROVED



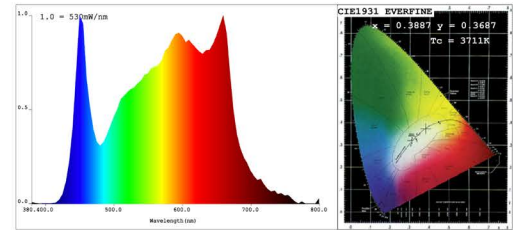
INFINITY 600



SPECIFICATIONS

Total PPF	1190.21
Input Power	630W
Efficacy	1.89 umol/J
Voltage / Amp	277VAC
Cooling	Passive
Dimming	Not Available
Power Factor	>95%
Max Operation Temp	25°C
Fixture Dimensions	39.5" x 5.25" x 3.75"
Mounting Height	18" Above Canopy
Cord Length	8 Feet
Warranty	5 Years

LIGHT SOURCE TEST



CIE Color Parameters:
 Chromaticity Coordinate: $x=0.3887$ $y=0.3687/u=0.2339$ $v=0.3328$
 CCT: $T_c = 3711K$ $P_{\text{req}} \text{ WaveL} = \phi = 583.7nm$ $Purity = 27.3\%$
 Peak WaveL: $\lambda_p = 60nm$ Half Width: $\Delta\lambda = 23.6nm$ Ratio: $R=20.7\%$ $G=75.3\%$ $B=4.0\%$
 Average Wave: $583nm$
 Rendering Index: $Ra=93.7$
 R1 =94 R2 =97 R3 =97 R4 =93 R5 =94 R6 =93 R7 =94 R8 =88
 R9 =73 R10=92 R11=93 R12=77 R13=95 R14=98 R15=94

Photo Parameters:
 Flux: $\Phi = 5933.7 (lm)$ Luminous efficacy: $62.24 (lm/W)$ Luminous Power: $P = 96.04 (W)$

Electrical Parameters:
 $U = 233.4V$ $I = 0.432A$ $P = 95.3W$ $PF = 0.946$

Instrument Status: Scan Range: 380.0nm-800.0nm Interval: 15.0nm REP = 4287 % = -1.315% Ip = 52385 TWP (PM7) = 34.9degrees centigrade

DIMENSIONS

